

## ASSEMBLY INSTRUCTIONS EAN code 4041104015749

### General safety instructions for product use and operation



#### **Caution:**

1. Read the following instruction thoroughly before unpacking the luminary and starting its installation.  
Important! Read this instruction carefully. Retain the operating instruction for later use.  
This product is intended for use in a private household, not for commercial or industrial use!
2. PLS note that all kind of work within electrical appliances shall be proceeded only by a professional electrician.
3. PLS follow the instruction and keep it for the future needs.
4. Whenever you give the luminary product to the third person always include the corresponding instruction.
5. The product is only intended/allowed for connection to 220-240V~ 50Hz AC Voltage and only with the light sources as indicated in the part called „Technical Parameters“
6. Avoid any damaging or clamping of cable. Cables must be laid in such a way that they do not run over sharp edges and are not crushed or subjected to tensile loads.
7. Please do not look directly into light while switching on or operating the illuminator to avoid eye damage.
8. If there are any electrical components or parts broken, have it replaced or repaired only by an authorized electrician.
9. This luminary is intended only for an indoor installation (IP44) in a private home.  
-not intended to be installed in the surrounding where the explosion and/or fire hazard exists  
-keep the luminary far away from easy flammable substances and/ or objects.  
- do not expose the luminary towards strong impact of warmth, humidity and/ or dust.
10. The luminaire is designed according to protection class II and does not require a protective conductor. conductor



**Warning:** Before you start any kind of work within the electrical appliance, you must cut off the current supply at first. Pull out the fuses or switch the current off assuring nobody else switch it back on. Danger of electrical shock!!

#### **Cleaning and Maintenance.**

- 1.PLS cut off the electrical supply and let the luminary get completely cooled before you start cleaning it.
- 2.PLS clean the luminary with a dry soft cloth.

#### **Repairs**



**Warning:** PLS note that all kind of work within electrical appliances shall be proceeded only by an authorized electrician.

#### **Technical Parameters:**

220-240V~ 50Hz, 1 x LED (whole lamp) 22Watt, 2500lm-4000K

220-240V~ 50Hz, 1 x LED-Board (only) 20Watt, 3000lm-4000K

This product contains a light source of energy efficiency class <E>.



Replaceable (LED only) light source by a professional.



Replaceable control gear by a professional.

**LED** 20W  
3000 lm



22W  
2500 lm

t

25.000 h

T<sub>K</sub>

4.000 K



10.000 x



<2 s

The CE-conformity declaration to the product is available on our homepage: [www-h-p-i.de](http://www-h-p-i.de) under point “Produktinfo”.

### **Assembly instruction**

1. PLS remove any packaging material from the product and its parts.
2. PLS put the all the delivered parts together step by step, following below given drawing and text.

### **Waste Disposal of the electrical appliance!**

If you want to get rid of the product one day, be aware that many components are made of valuable raw materials and can be recycled and reused. Never dispose any electrical appliance to the dustbin, but bring it to your Electrical Waste Collecting Plant.

**Chargen-Nr.: KT26455**

## **INSTALLATION INSTRUCTIONS:**

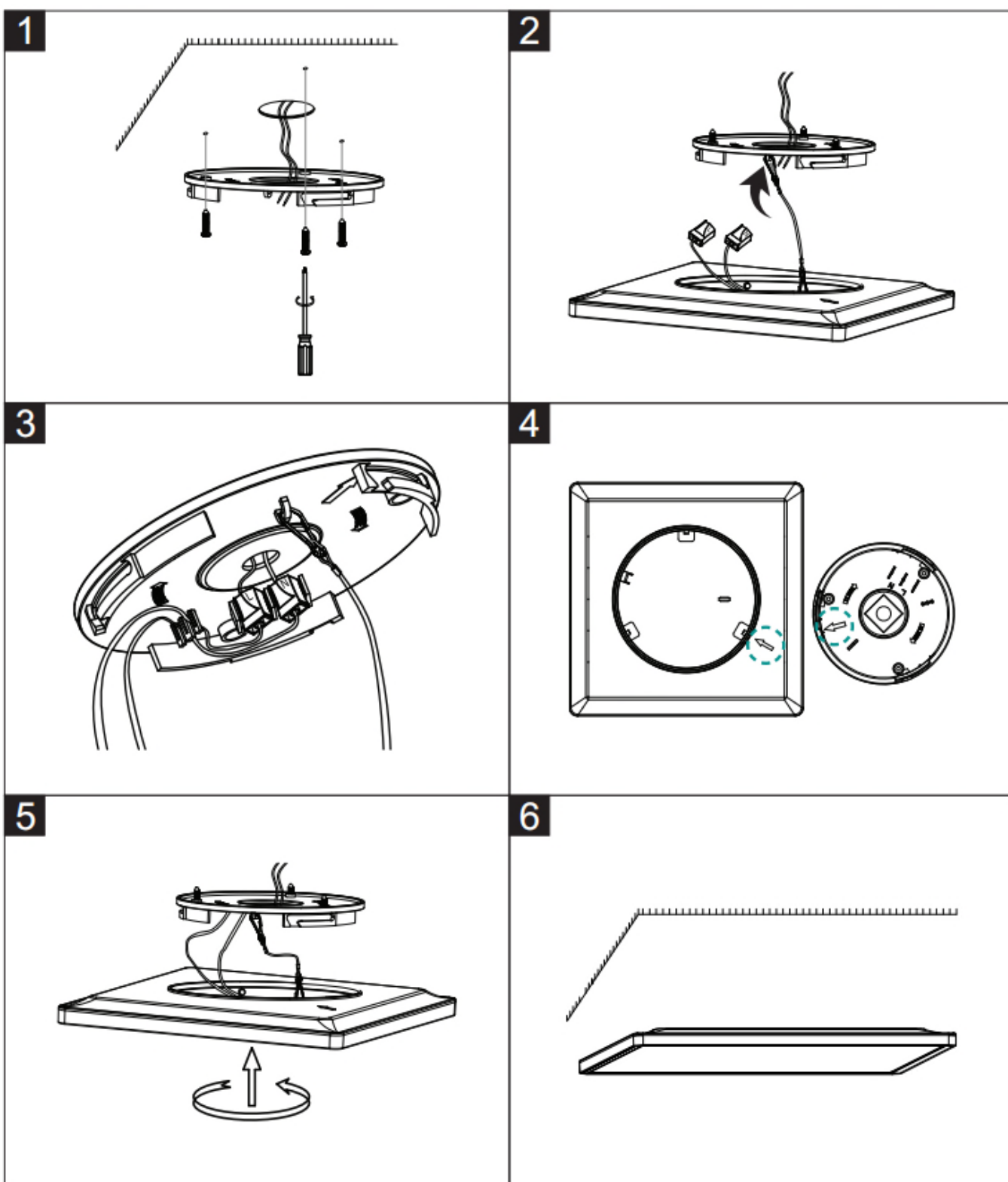
Electrical products can cause death, injury, damage to property.

Installation of this product must be carried out by a qualified electrician.

Ensure mains supply is switched off.

Before commencing installation work disconnect the mains cable from the power supply-remove fuse or turn switch to {off}.

1. Use the mounting plate as a template to mark corresponding position of holes on the ceiling. Drill the holes on the ceiling matching the openings of the mounting plate. Insert wall plugs into the drilled holes. Put the power cord through the silicon opening of mounting plate. Fix the mounting plate on the ceiling by tightening screws.
2. Use the steel cord connecting and fixing both mounting plate and the lamp body altogether.
3. Connect the wirings: Live wire to the L (live) wire terminal block, and the Neutral wire to the N (neutral) wire terminal block. Place and fix the terminal blocks on its marked places on the mounting plate.
4. Align both arrows of the lamp body & mounting plate to the same position (both arrows are pointing to each other).
5. Rotate the lamp body anti-clockwise to fix the lamp body to the mounting plate
6. Once installed, Switch on mains supply and test the fitting. Ensure all items and screws are secured and fitted tight and correctly.



**WARNUNG!** The connection cables must be covered with the silicone hoses (supplied).

**Connect to the power supply in accordance with national regulations.**



**Producer/Importer:**

Home Product Import GmbH  
 Graf-Zeppelin-Straße 5  
 D- 46149 Oberhausen, [www.h-p-i.de](http://www.h-p-i.de)

**Explaining the symbols**



Protection class I – the appliance must have their chassis connected to electrical earth by a separate earth conductor coloured green/yellow in most countries



Protection class II or double insulated electrical appliance is one which has been designed in such a way that it does not require a safety connection to electrical earth (ground)



Protection class III - A Class III appliance is designed to be supplied from a separated/safety extra-low voltage (SELV) power source



Required minimal distance between the light source and the illuminated surface (in meter) to be kept



suitable only for low-pressure halogen lamps



only for indoor installation

**IP44** suitable for outdoor installation (splash proof)



Product fulfils all the valid European directives



At the end of its lifecycle, this product must not be disposed of with your normal waste, but instead must be returned to a recycling facility for electric and electronic devices